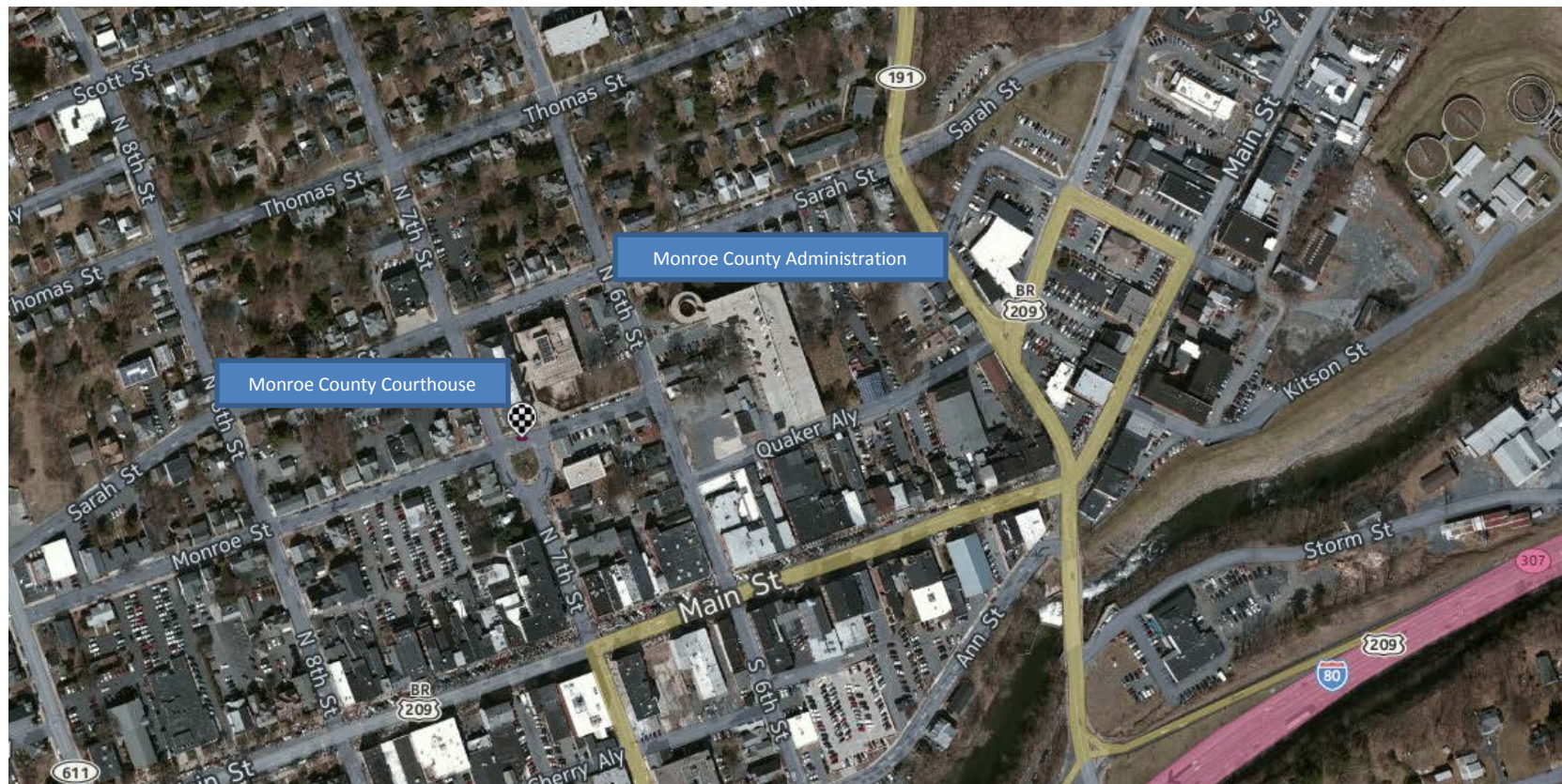


Monroe County Courthouse & Administration Building



From North and West (Via Interstate 80)

- 1) Interstate 80 East to Stroudsburg.
- 2) Exit at Main Street, Exit #305.
- 3) Proceed to 5th traffic light, intersection of Main St & 6th St, turn left on 6th St.
- 4) Proceed to Monroe County Administrative Center on the right side of 6th St.
- 5) Park in the Administrative Building Garage.

From South (Via Route 33 North)

- 1) Route 33 North to Interstate 80 East. (Route 33 will merge with Route 209 after Snydersville)
- 2) Stay straight on Route 209. Route 209 will merge with Interstate 80 East.
- 3) Exit at Main Street, Exit #305.
- 4) Proceed to 5th traffic light, intersection of Main St & 6th St, turn left on 6th St.
- 5) Proceed to Monroe County Administrative Center on the right side of 6th St.
- 6) Park in the Administrative Building Garage.

From East (Via Interstate 80)

- 1) Interstate 80 West into Stroudsburg
- 2) Exit at Broad St, Exit #307.
- 3) At the end of the Exit ramp, turn right at the stop sign.
- 4) Stay in the left turn lane.
- 5) Take first left onto Ann St.
- 6) Turn right on 6th St, cross over Main St.
- 7) Park in the Administrative Building Garage.